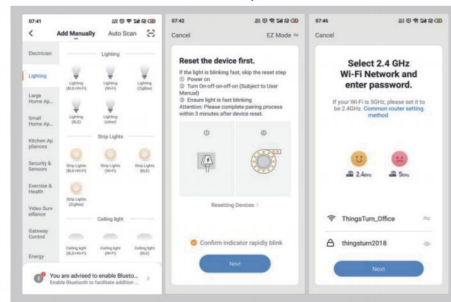
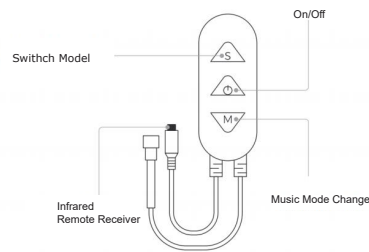


Specifications

Power	<=150W
Music Input	Environmental
Signal Mode	TTL-DAT/CLK
Points	8~1250(RGB/RGBW/RGBWW)
Input Voltage	DC5~24V
Speed	32 Levels
Sensitivity	20 Levels of MIC sensitivity
Control Type	Tuya APP Control (HarmonyOS/Android/IOS)
Brightness	1%~100% (Gradient adjustment)
RGB Settings	Arbitrary of RGB-RBG-GRB-GBR-BRG-BGR
Effect	White + Colour + Run + Music
Config Save	Automatic parameter saving

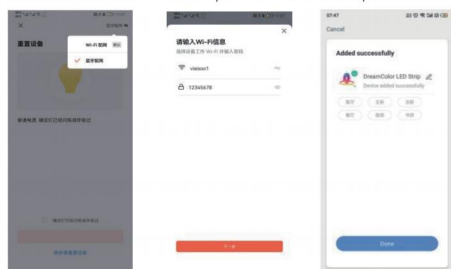
Function

Controller button

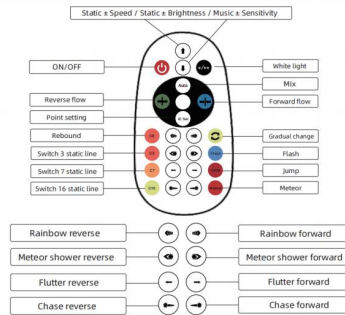


4. Adding a Device - Bluetooth Network

In the main application page, click the "+" in the upper right corner to go to the next window page, and then select "Lighting," as shown below. In normal mode, click "Bluetooth Network" in the upper right corner to the Bluetooth mode window page. In the Bluetooth network, make sure the device blinks and proceed to the next step.



Remote Control Panel



Function of IC set key:

- Short press in normal playing mode: switch N type or Z type wiring mode (related to music spectrum pulsating direction);
- In normal playback mode, hold down for about 5 seconds to enter the setting state

Step 1: Chip type (press up or down the arrow to adjust the chip type, a total of 12 types of adjustment, when all the lights are red, green and blue, it is the correct timing, then press the IC set key to save the chip type, the RGB sequence setting will be automatically entered);

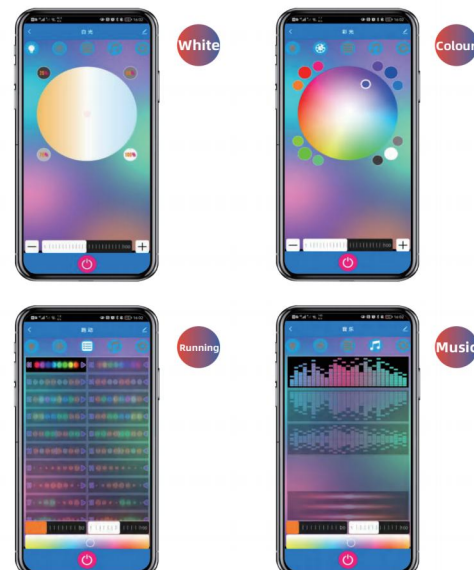
Step 2: RGB sequence Settings (Observe the color of 8 or 8 groups of lights in front of the light belt, according to the signal from front to back, red, green, blue and white is the correct RGB sequence; if not, adjust the arrow up and down, a total of 6 kinds of sequence cycle adjustment, after the correct adjustment, press the IC set key to save the sequence, it will automatically enter the height setting. At this time, the light with bright red 8 / group of lights indicates the current height);

Step 3: Press the arrow to adjust the height up and down. After adjusting the height OK, press the IC set key to ensure the height value. The width setting will be automatically entered.

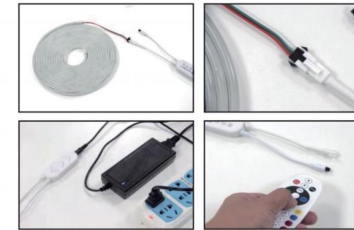
Step 4: Press the arrow to adjust the height up and down, adjust the width OK, then press the IC set key to save

5. APP Page

After the device is successfully connected, the relevant smart device will be displayed on the home page. APP is mainly divided into five parts, white light mode, color light mode, running mode, music mode and Settings



Installation



APP Function

1. Download and install the application



Use phone to scan the QR code below or search "Smart Life" in application marker to Download and install the App

3. Adding a device -WiFi Configuration

In the main application page, click the "+" in the upper right corner to go to the next window page, and then select "Lighting," as shown below. In normal mode, ensure that the device is blinking red quickly before going to the next step.

Note:

If the light is not flash, please power on your device, and then power off (repeat 3 times) .If add the device in Normal mode fails many times, please go to Add Device-bluetooth mode.



Setting Enter the setting interface and set the parameters according to this steps:

- Click the icon and observe the LED, If you see 8 (Group) LEDs lights red or green or blue is OK;
- Select the signal wire routing type;
- Adjust RGB order:Observe the current light color and click the corresponding R、G、B button until the LED is white);
- Adjust LED height and width;
- Save settings.

6. Work with Amazon Alexa and Google Assistant

At present, it supports AI speakers such as Tamil elf, Xiaozhi housekeeper, Baidu Xiaodu, Amazon Alexa, Google assistant and Yandex Alice (Control ON/OFF, brightness, color) AI speakers of other brands will be gradually Opened.

Note: AI speakers are not necessary. You can buy corresponding brands and models according to your needs.

How to reset the controller?

After connecting the controller, turn on the power, long press the switch button of the controller for 10 seconds, wait for the light belt to blink slowly or quickly, then connect the light strip